

The Council's Scrutiny Function

What is Scrutiny?

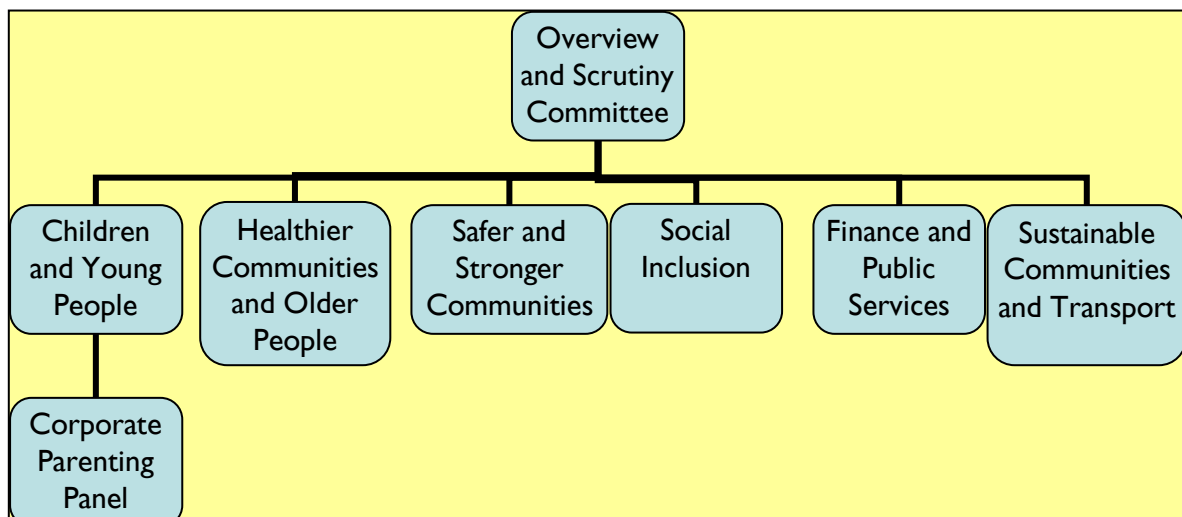
Scrutiny is a Member-led statutory process, introduced by the Local Government Act 2000. Scrutiny is designed to hold the Council's Cabinet (decision making body) to account.

What is the role of Scrutiny?

- Challenging the Cabinet as well as external organisations and public bodies, for example, the health service, Police and Transport for London
- Advising the Cabinet on the Council's Budget and Policy Framework
- Focussing on the Council's priorities and areas for improvement
- Reviewing decisions made by the Cabinet and others and making recommendations for change where necessary
- Looking at the performance of services and value for money
- Seeking to ensure that services are sensitive to local needs

Scrutiny Structure

We have an Overview and Scrutiny Committee and six thematic Panels, the structure is set out below.



Overview and Scrutiny Committee

The Overview and Scrutiny Committee coordinates the scrutiny function, oversees the work of the Panels, monitors and reviews decisions and deals with overarching issues that affect a number of service areas. These include: the Council's budget, modernisation and regeneration programmes and for the last year the preparations for and benefits of the Olympic and Paralympic Games.

Scrutiny Panels

Scrutiny Panels are organised on a thematic basis and look at performance and how we provide services. Two of the Panels fulfill a specific statutory requirement: the Healthier Communities and Older People Panel; and the Safer and Stronger Scrutiny Panel, when it sits as the Crime and Disorder Committee.

Work Programme

Each Panel has a work programme that is coordinated and managed by the Overview and Scrutiny Committee; the work programme has to be agreed by Council.

The scrutiny work programme is based on the Council's priorities and important matters of local concern.

For further information please contact: scrutiny@greenwich.gov.uk